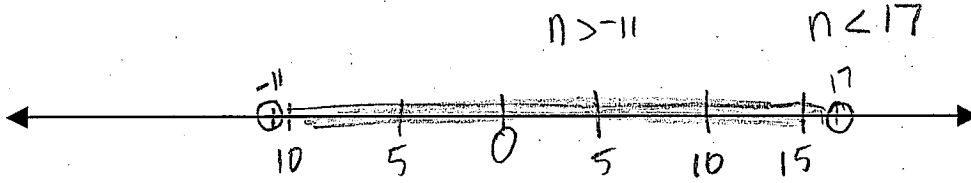
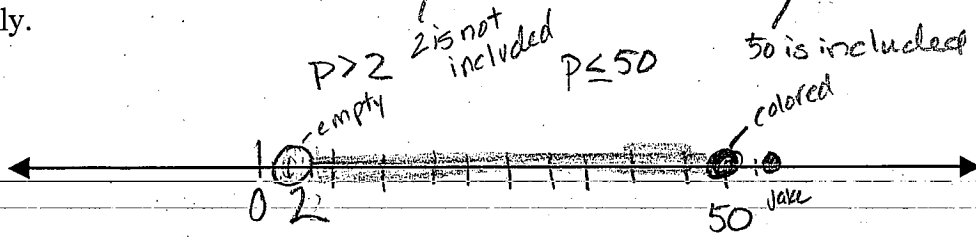


I picked #7

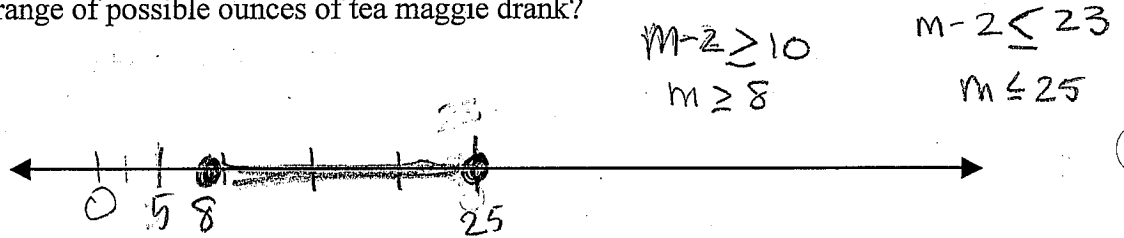
Chose one of the inequalities and graph it.



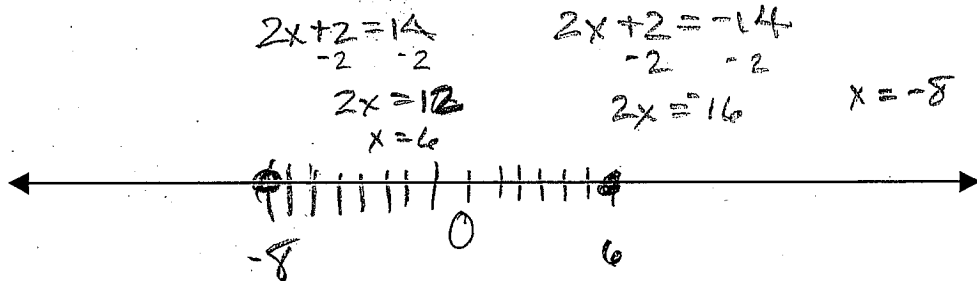
9- An average person can carry more than 2lbs of dirt but no more than 50lbs of dirt. If Jake can carry more than 52 lbs is he in the average range? Shows Jakes skills graphically.



9. Maggie can't remember how much tea she drank today. Two ounces less would have been at least 10 ounces, but could have been as many as 23 ounces. Can you graph a range of possible ounces of tea Maggie drank?



10. A muffin sits on a table. If we double it's distance from me- I am in the middle- then add two more inches the muffin is 14 inches from me. It could be on the left or the right. Solve and graph me and the muffin.  $|2x+2|=14$



Name: ANSWERS

This is a practice test.... Good luck I will post the answers on my web site.

Check the boxes for each set <sup>Not 0</sup> <sub>or</sub> <sup>0, 1, 2</sup> <sub>or</sub> <sup>-1, -2, 0, 1, 2</sup> <sub>or</sub> <sup>decimal or fraction</sup> <sub>or</sub> <sup>un ending</sup> <sub>or</sub> <sup>all numbers</sup>

	Natural	Whole	Integer	Rational	Irrational	Real
1.82				✓		✓
$\sqrt{36} = 6$	✓	✓	✓	✓		✓
$-5/6$				✓		✓

Solve preferably with out a calculator

a)  $16 - [3(6 - 2)] =$

$$16 - 3 \cdot 4$$

$$16 - 12 = 4$$

b)  $18 + 4 \cdot 3 = \frac{18+12}{2+4} = \frac{30}{6} = 5$

Absolute values

Remember two answers for each.

1.  $\frac{2|x-5|}{2} = \frac{20}{2}$

$$|x-5| = 10$$

$$x-5 = 10 \quad x-5 = -10$$

$$x = 15 \text{ or } x = -5$$

2.  $\frac{7|n+3|}{7} = \frac{42}{7}$

$$n+3 = 6 \text{ or } n+3 = -6$$

$$n = 3$$

$$n = -9$$

Solve each inequality

4.  $7(2r-5)+3 > 7r-4$

$$7(2r-5) > 7r-7$$

$$7r > +28$$

$$14r - 35 > 7r - 7$$

$$r > 4$$

$$7r - 35 > -7$$

5.  $-8 \leq 3y - 20 < 52$

$$-8 \leq 3y - 20$$

$$3y - 20 < 52$$

$$12 \leq 3y$$

$$3y < 72$$

$$4 \leq y$$

$$y < 24$$

3.  $5|4w-1| = 5w+40$

$$|4w-1| = w+8$$

$$4w-1 = w+8$$

$$4w-1 = -w-8$$

$$3w = 9$$

$$4w = -w-7$$

$$w = 3$$

$$5w = -7$$

$$w = -7/5$$

4.  $|2y-3| = 29$

$$2y-3 = 29$$

$$2y-3 = -29$$

$$2y = 32$$

$$2y = -26$$

$$y = 16$$

$$y = -13$$

6.  $|2y+8| < 2$

$$2y+8 < 2$$

$$2y+8 > -2$$

$$2y < -6$$

$$2y > -20$$

$$y < -3$$

$$y > -10$$

7.  $|n-4| < 13$

$$n-4 < 13$$

$$n-4 > -13$$

$$n < 17$$

$$n > -11$$