

What is a Hormone?



What are Hormones?

Complex Biochemicals are divided into 3 subcategories;

- Amine: Derived from Tyrosine and Tryptophan
- Peptide: Long chains of Amino Acids e.g. Insulin, Growth Hormone
- Lipids: Derived from Lipids, mostly Steroid e.g. Testosterone Cortisol

How a Hormone Works

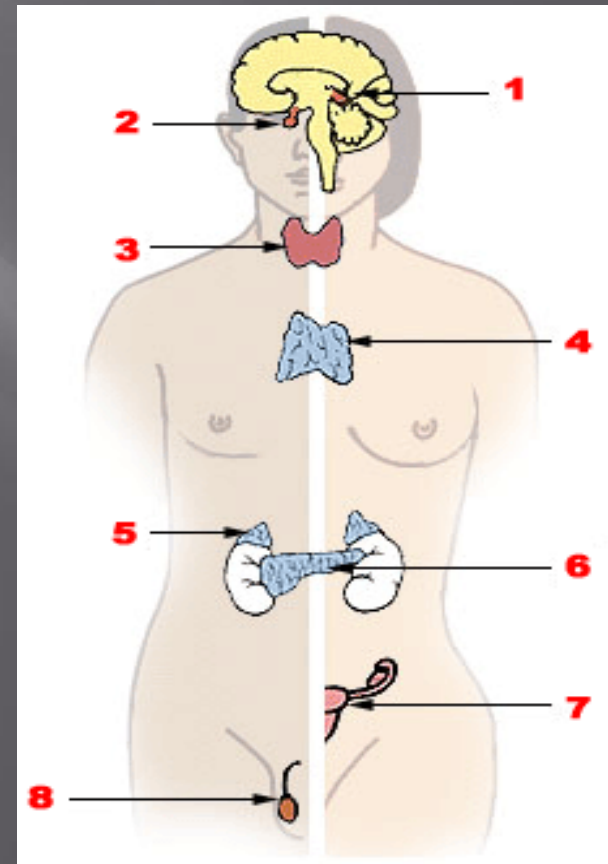
- Brain sends a signal
- Hormone chemicals go into the blood stream
- From the blood stream they travel to specific target cells

Endocrine System

➤ Integrated system of organs that release hormones through the blood stream

➤ Major endocrine glands:

1. Pineal gland
2. Pituitary gland
3. Thyroid gland
4. Thymus
5. Adrenal gland
6. Pancreas
7. Ovary
8. Testis





Copyright 2005 ScienceFictionFantasyHorror.com. All rights reserved.