

Social Change Affecting Adolescents



What are the factors and how does it affect them?

Peer Pressure



Peer-pressure often causes kids to do things they don't really want to do, but they do them anyways because their friends pressure them to.

Parents



Parent-child conflict is a result of some of the social changes that occur in an adolescent's life.

Fitting in

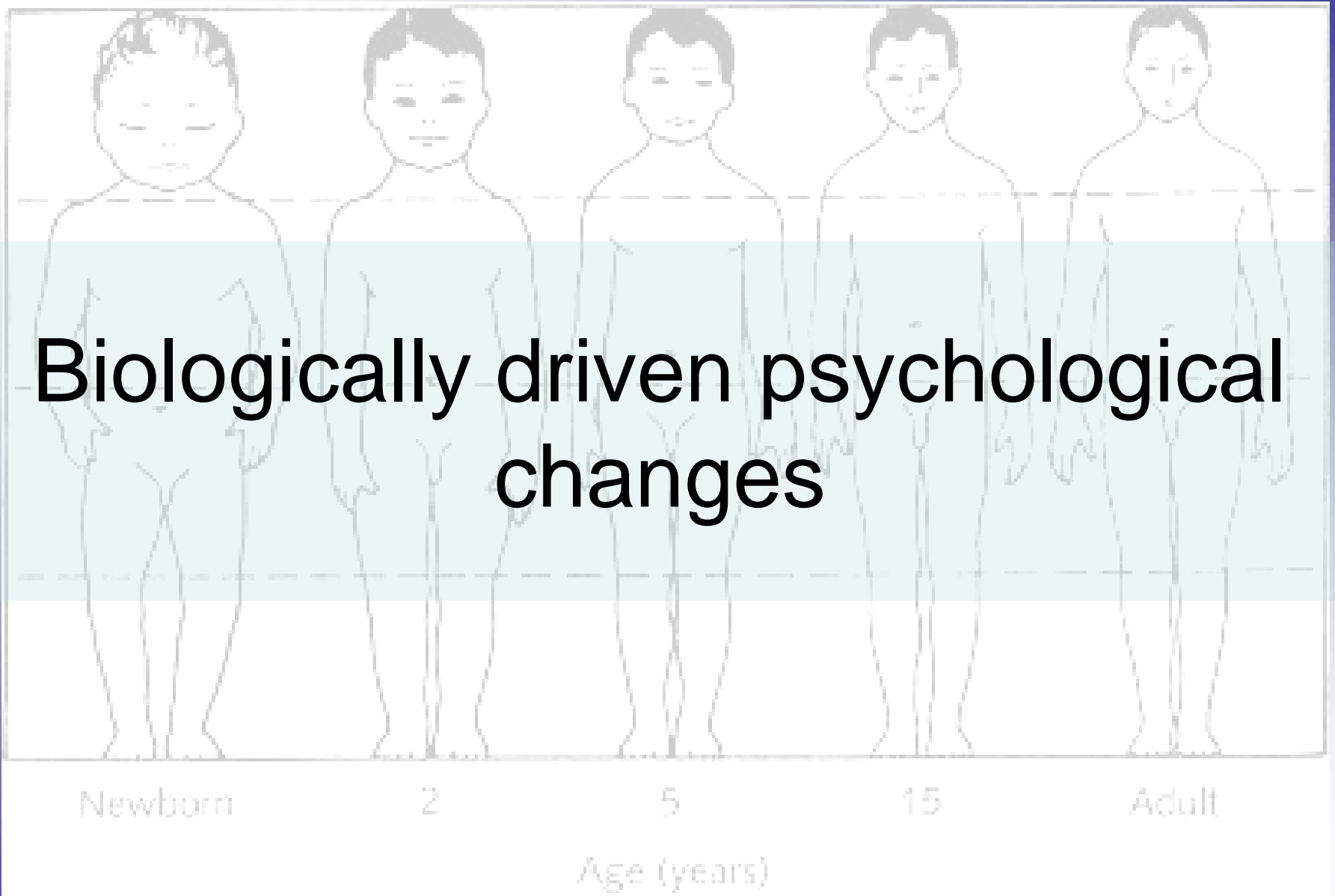


The need to fit in often causes kids to change their own appearance or opinions, just to be like others.

Social Norms



The need to fit in often causes kids to change their own appearance or opinions, just to be like others.



Typical View of Teenage life



“I would that there were no age between ten and twenty three...for there is nothing in between but getting wenches with child, wronging the ancientry, stealing, fighting...”

--Shakespeare (The Winter's Tale; Act III)

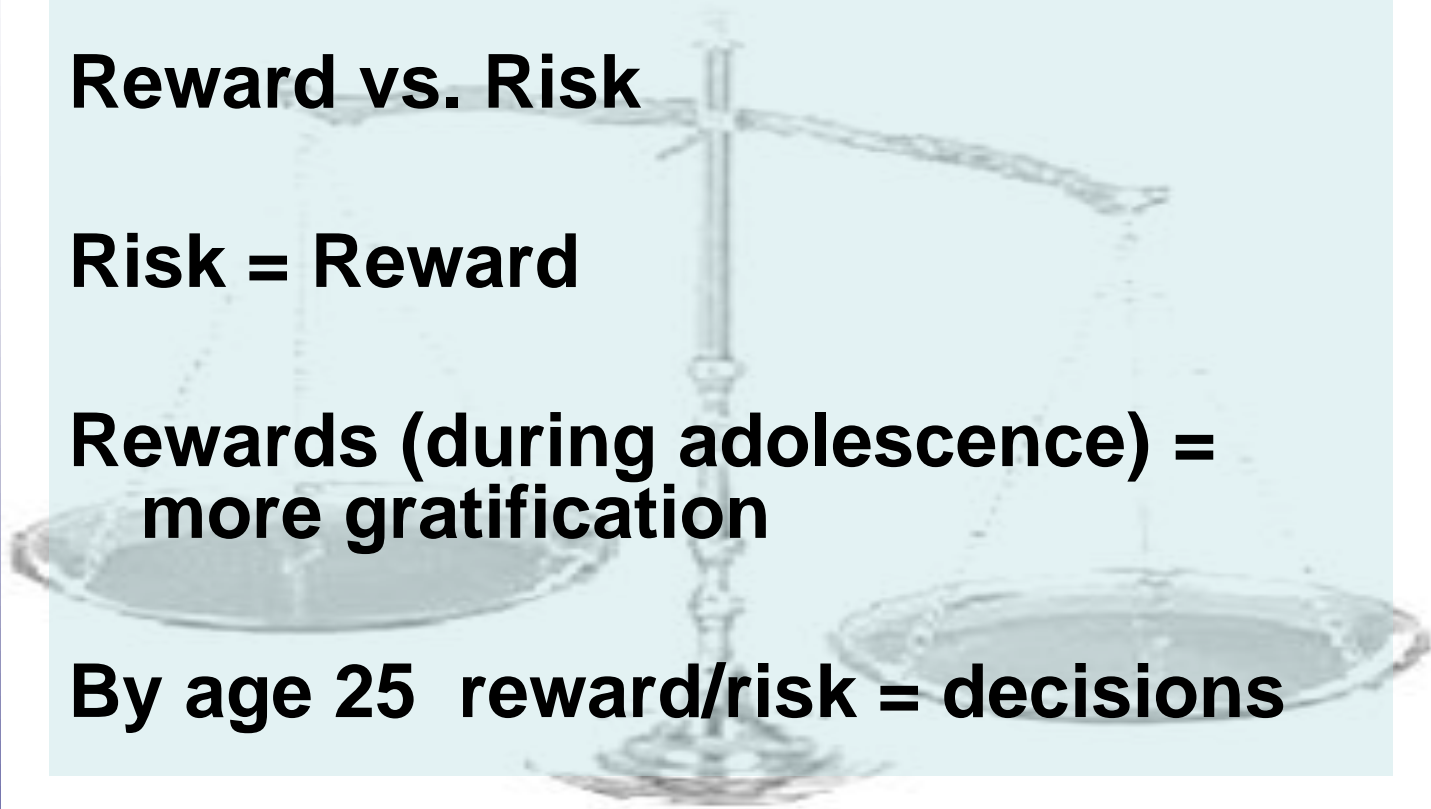
Self control

Reward vs. Risk

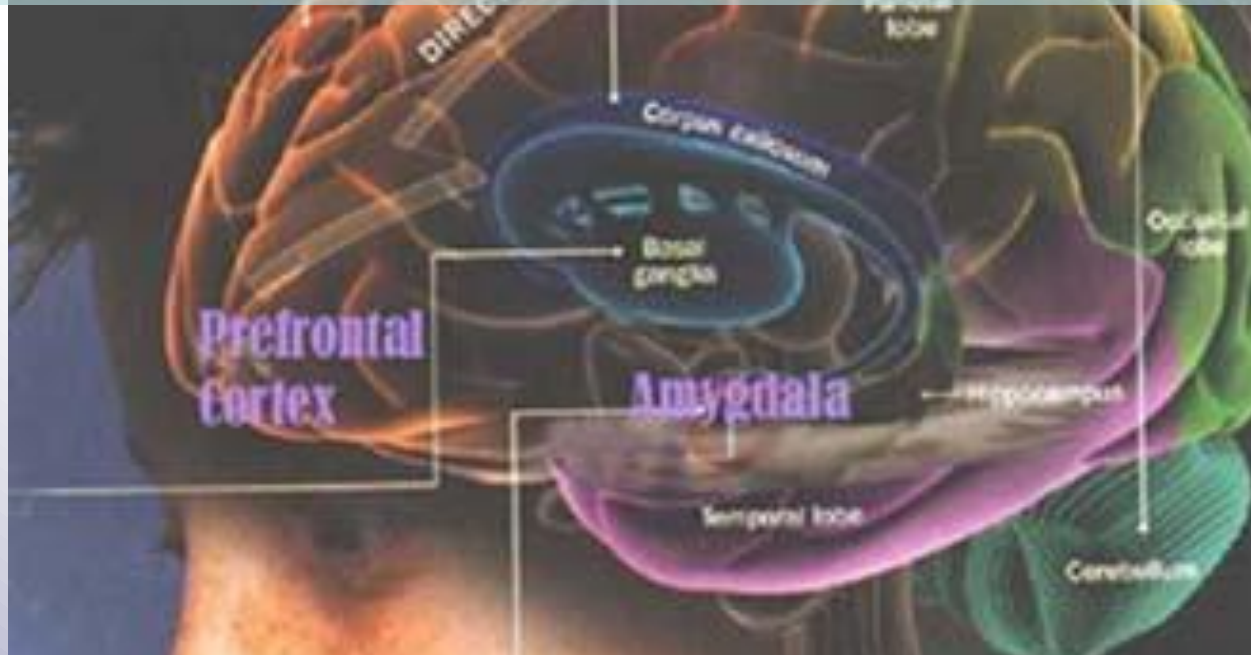
Risk = Reward

**Rewards (during adolescence) =
more gratification**

By age 25 reward/risk = decisions



Amygdala and prefrontal cortex



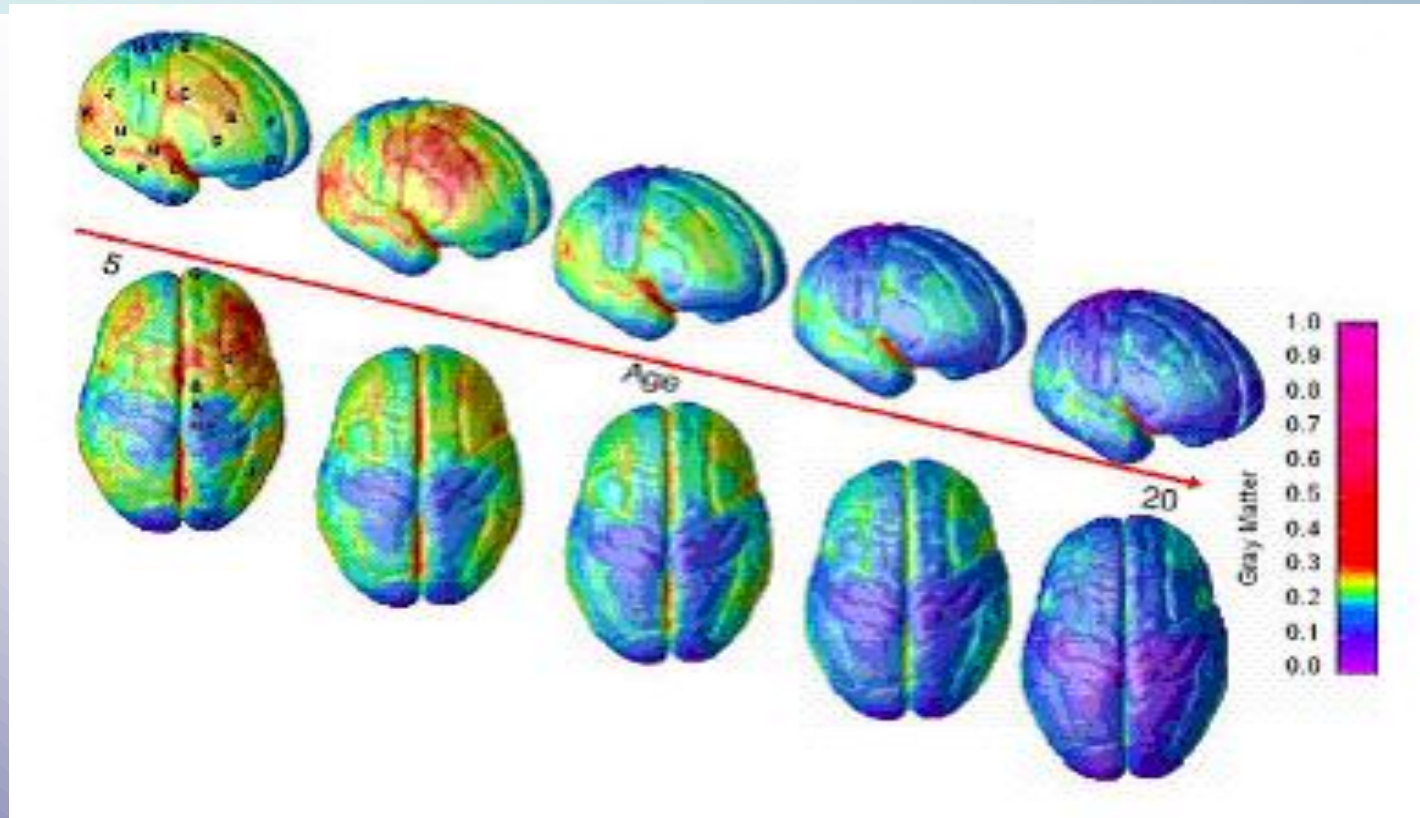
Adolescents are stereotypically thought of as being reckless.

There is some biology behind this idea.

The Amygdala develops faster than the frontal cortex.

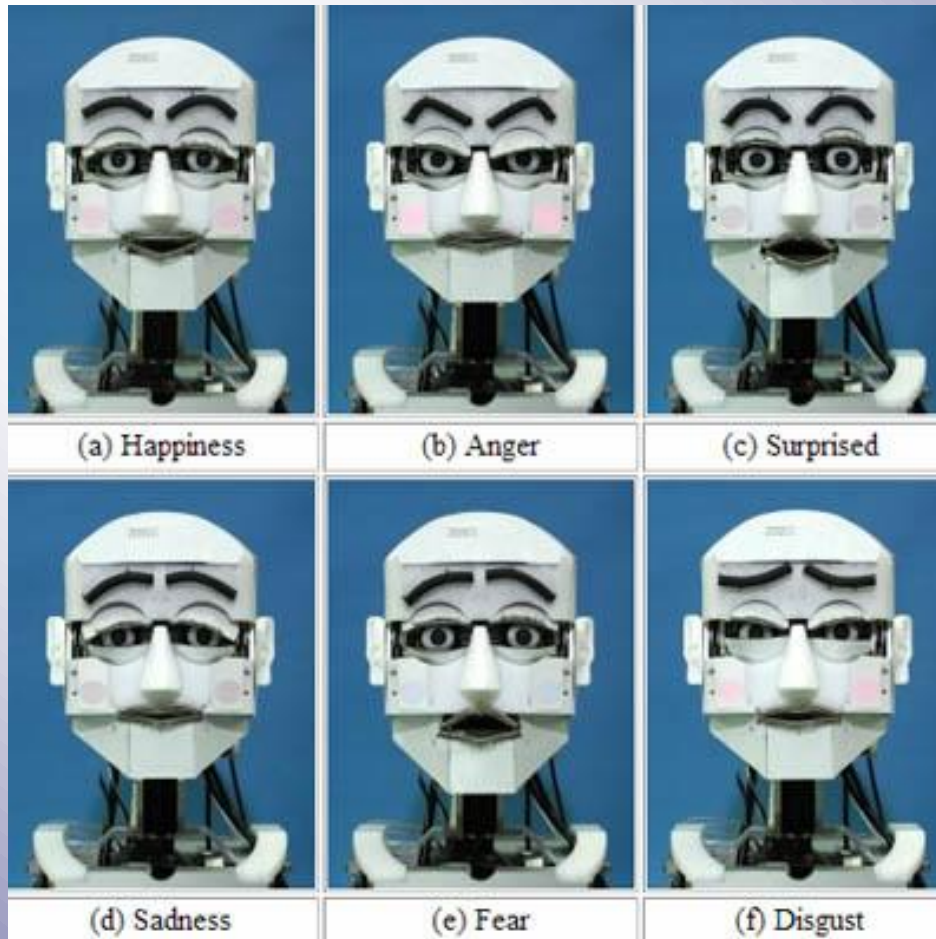
Reward vs. risk = Amygdala vs. Prefrontal Cortex

Prefrontal Cortex



Executive function development

Emotional and cognitive differences



Cognitive Advances



- *Increased ability to reason abstractly
- *Understanding abstract or complex concepts
- *Speculate alternative possibilities
- *Reason hypothetically

EMOTIONS



- Typically seen as extremely emotional
- Negative emotions and mood swings
- New experiences = new feelings
- Egocentrism: Constant feeling of being watched, self consciousness



TEEN ANGST

BECAUSE LIFE IS SO HARD IN THE SUBURBS