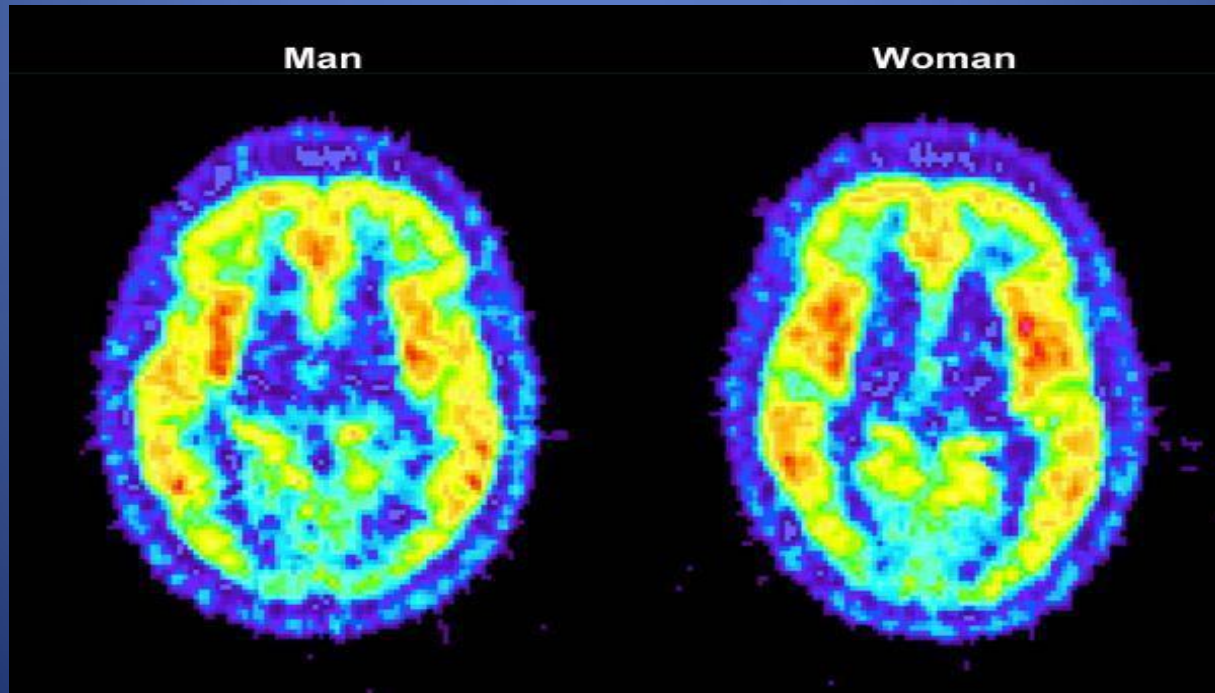


- ❖ Scientists have proved that until about eight weeks after conception, all brains are considered female.
- ❖ Physically female brains may be smaller than men's, but the frontal and parietal areas of the cerebral cortex contain more folds, so they actually have a larger total surface area.
- ❖ The hippocampus takes up a larger percent of the female brain than the male brain.

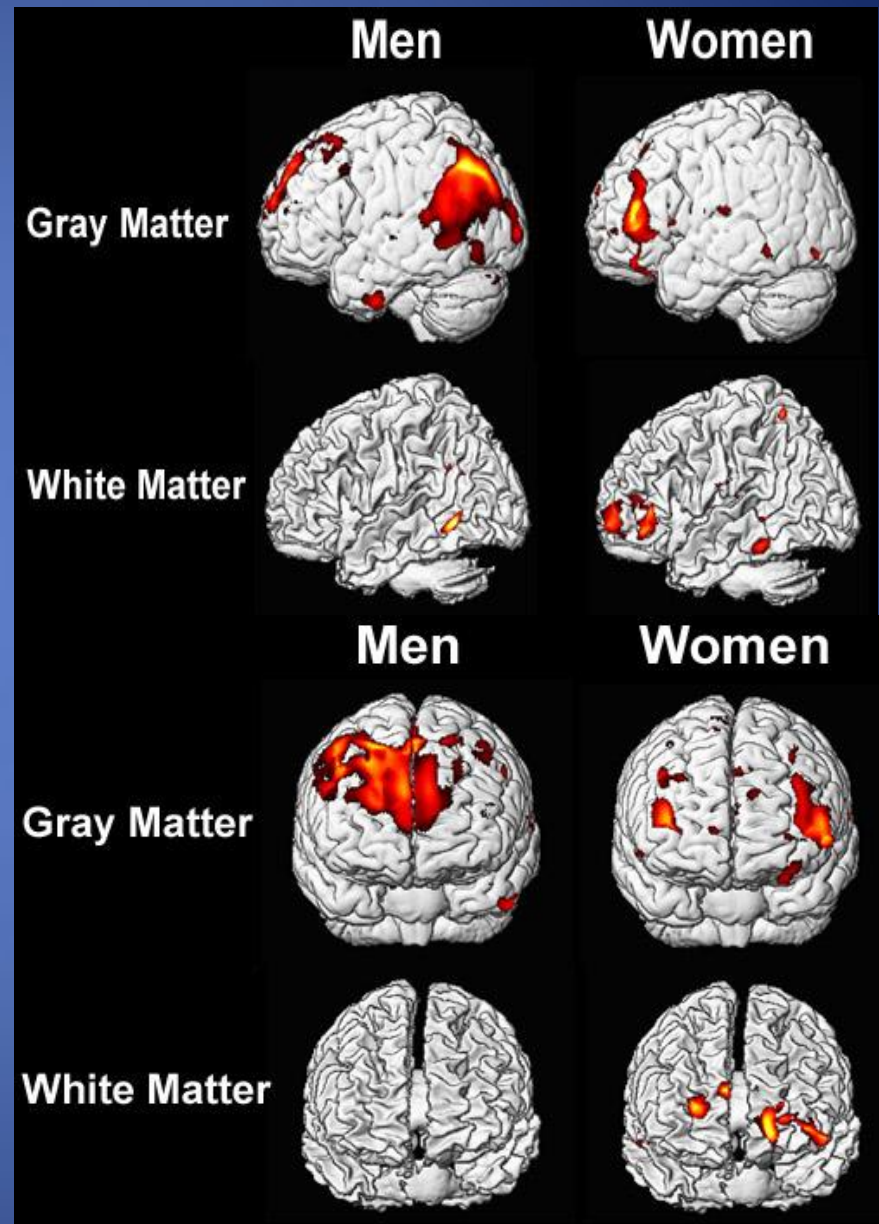


- ✓ Woman's brain produce significantly less serotonin than men's.
- ✓ Woman is usually better in language abilities, men tend to have an edge on spatial abilities.
- ✓ Women's brains operate at a higher temperature, due to burning more glucose

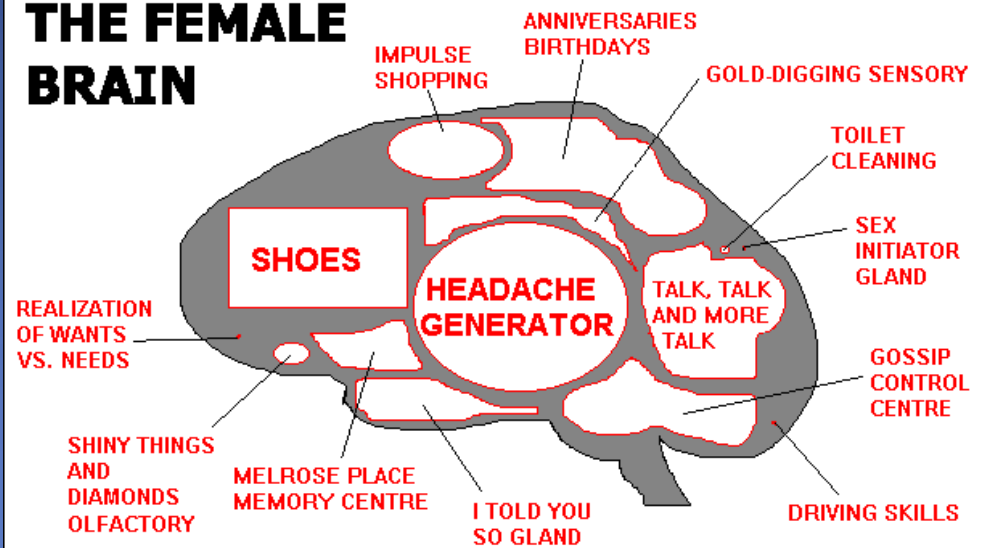
- Many authors and researchers have said that men use fewer words per day than women. The "word gap" can be anywhere from 1,000 to 10,000 words a day.



- Men use 6.5 times more gray matter than women for determining intelligence.
- Women use nearly 10 times more white matter than men for determining Intelligence

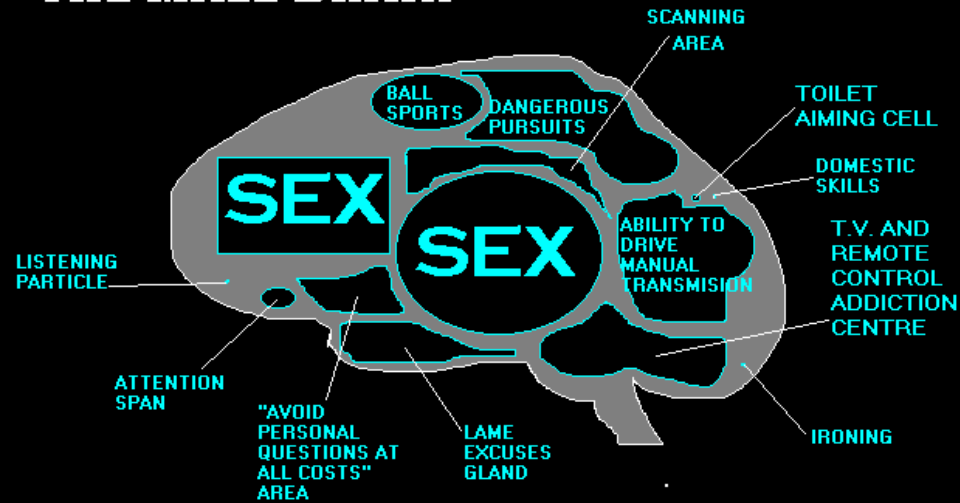


# THE FEMALE BRAIN



FOOTNOTE: The "Put Oil into the Car" and "Be Quite During the Game" glands are active only when the "SHINY THINGS AND DIAMONDS" OLFactory has been satisfied or when there is a shoe sale.

# THE MALE BRAIN



FOOTNOTE: the "Listening to children cry in the middle of the night" gland is not shown due to it's small and underdeveloped nature. Best viewed under a microscope.