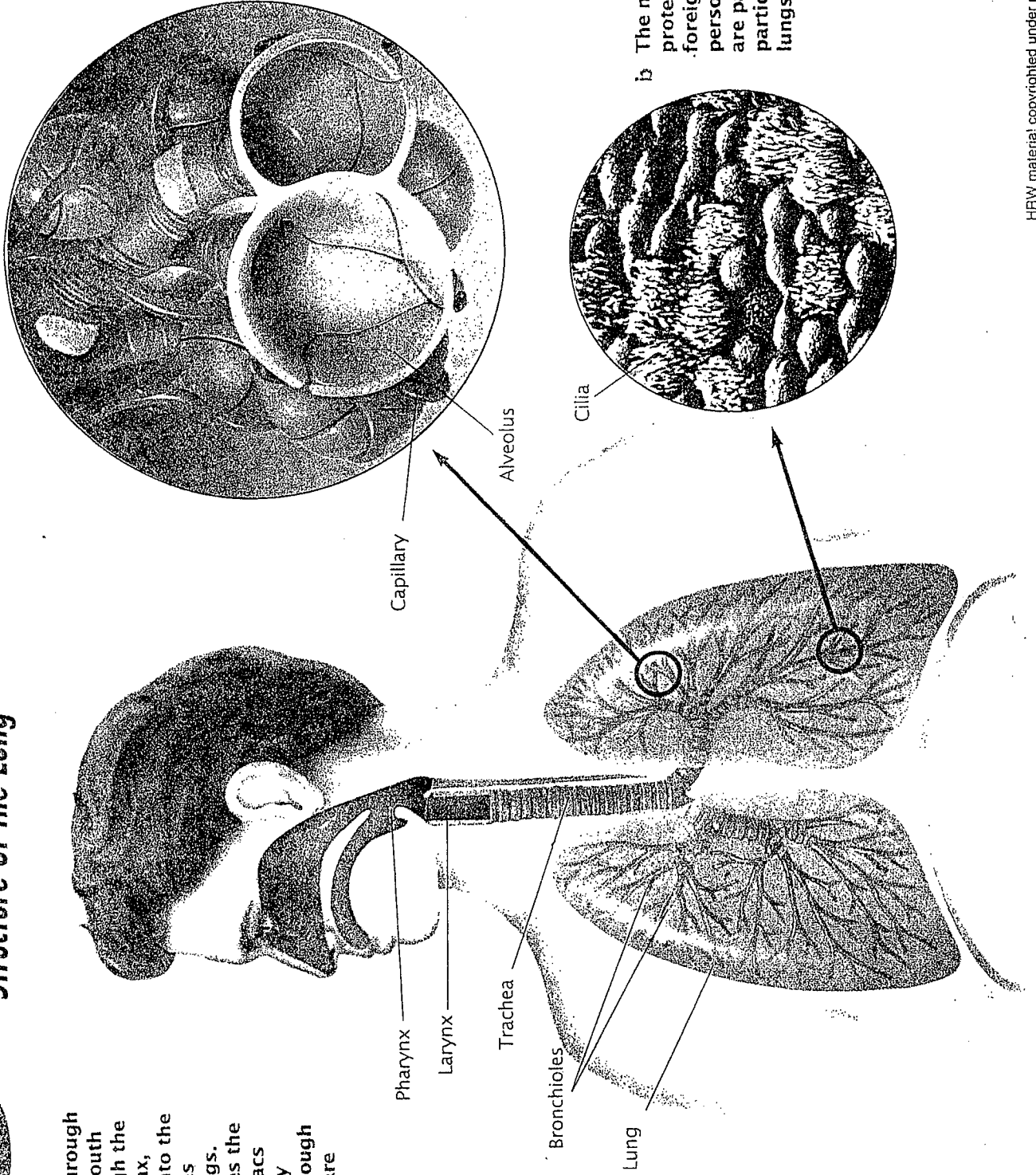


Structure of the Lung

a Air taken in through the nose or mouth passes through the pharynx, larynx, and trachea into the many branches within the lungs. It soon reaches the alveoli, tiny sacs surrounded by capillaries through which gases are exchanged.



b The motion of cilia protects the lungs from foreign particles. When a person smokes, the cilia are paralyzed, allowing particles to irritate the lungs.