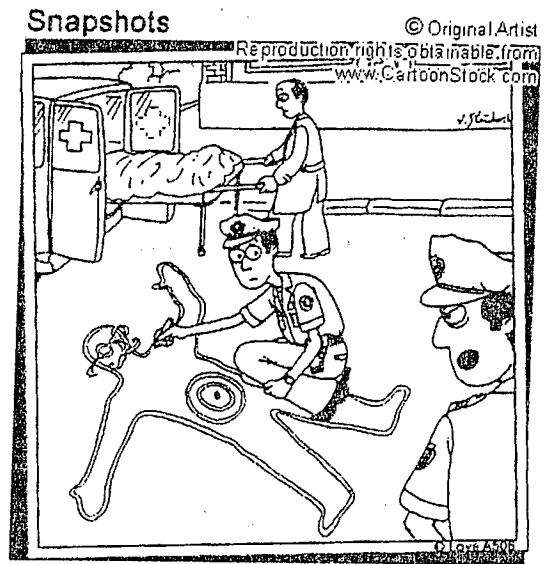


## CRIME SCENE SKETCHES

Properly prepared sketches may be used to question people, to prepare a report of investigation, and to present information in court. Sketches also are valuable sources of information for trial and defense counsels. Sketches are often introduced in court as evidence. They are used to acquaint the court with crime scenes and to help witnesses orient themselves as they testify.



Sketches complement notes and photographs made during a crime scene search. A sketch communicates information the way a photo does, but has the advantage of being able to have unneeded and distracting detail left out. Sketches concentrate attention on the most essential elements of the crime scene and show the relationship of each item of evidence to other items or to the body. With a sketch, it is often easier to see the big picture! There are two kinds of crime-scene sketches: rough and smooth. A rough sketch is the kind you draw while at the crime scene. The purpose of a rough sketch is to portray information accurately, not necessarily artistically. A rough sketch is usually not drawn to scale. Each piece of evidentiary material is mapped, or located by its distance from two fixed points, such as a wall, a lamppost, or a sidewalk. Doing so provides exact graphic coordinates of each item. You may not make changes in your sketches after you leave the scene.

A smooth sketch is a more finished version of a rough sketch, using the information provided in the rough sketch. A smooth sketch need not be drawn by the same person who draws the rough sketch. But whoever draws the rough sketch must verify the accuracy of the smooth sketch. In fact, it is best if a smooth sketch is made by an experienced draftsman. (The engineer officer may be able to provide a qualified person for this task.) The name of the person who drew the smooth sketch is shown in the report and on the sketch. A copy of the smooth sketch is attached to each copy of the investigation report. Smooth sketches are often drawn to scale from information in the rough sketch. By making a scaled drawing, the numbers showing distances can be left out. If the smooth sketch is not drawn to scale, these distances must be shown.

## MAKING A ROUGH SKETCH

Any kind of paper may be used for a rough sketch. However, bond or graph paper is best. It can be placed on a clipboard large enough to form a smooth area for drawing. To prepare a rough sketch you need:

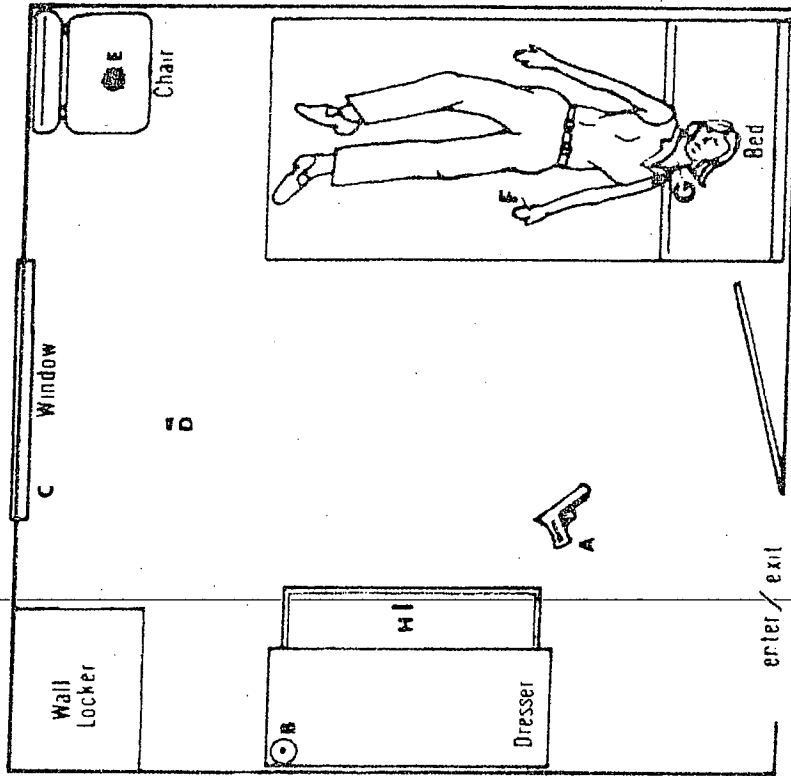
- \* A soft lead pencil.
- \* A 100-foot steel tape.
- \* A straightedge ruler.
- \* Several thumbtacks to hold one end of the steel tape down when you are working alone.
- \* A magnetic compass.

You may add as many items to this list of basics as you like.

Several items of information are considered essential in a crime scene sketch. But do not restrict your sketch to these items alone. The major constraint on detail in sketching is that the result must be completely intelligible to a viewer without a detailed study. **If you include too much detail, the major advantage of a sketch over a photograph is lost.**

1. Each sketch should include the critical features of the crime scene and the major, discernible items of physical evidence. Evidence sketches must show accurate measurements of the crime scene. They also show the location of evidence established by use of the triangulation method.
2. Each sketch should have a caption to identify the illustration. For instance, a caption might read: "Rough sketch showing evidence measurements and triangulation."
3. Each sketch must have a legend. The legend explains the symbols, numbers, and letters used to identify objects on the sketch.
4. Each sketch must also show the compass direction north.
5. You will need to include a scale designation for scaled drawings only. If no scale is used, write "not drawn to scale."
6. And each sketch must have a sketch title block containing the following entries:
  - USACIDC sequence number, or Report of Investigation (ROI) number.
  - Alleged offense.
  - Name and rank or title of the victim.
  - Scene portrayed--citing room number, building number, and type of building, (PX, commissary, house, troop billets).
  - Location--citing complete name of installation, city, state, and zip code.
  - Time and date sketch was started.
  - Name and rank or title of person who drew the sketch.
  - Name and rank or title of person who verified the sketch.
  - Incident report number: MP Report,

FINISHED SKETCH DRAWN TO SCALE



LEGEND

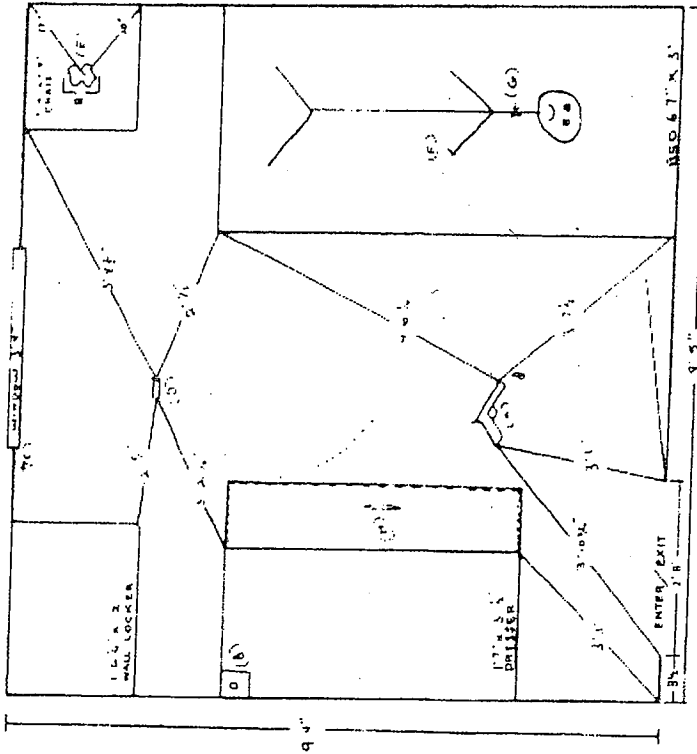
- A. Pistol
- B. Bottle
- C. Letters "HR"
- D. Shell casing
- E. Bed stain
- F. Fibers
- G. Gun shot wound
- H. Cigarette inside opened drawer

SCALE: 1/4" = 1 FOOT

TITLE BLOCK

CASE # 367-85-4819  
 OFFENSE: Death Investigation  
 SCENE PORTAYED: Room #7  
 BLDG: S-3251-B, Troop Billets  
 LOCATION: Ft McClellan, AL  
 VICTIM: SPA Faye M. Miller  
 TIME & DATE BEGAN: 1000 12 Jan 85  
 SKETCHED BY: SA Tim C. Winkler  
 VERIFIED BY: SGT Betty C. Goodwin

ROUGH SKETCH SHOWING EVIDENCE MEASUREMENTS AND TRIANGULATION



LEGEND

- A. PISTOL
- B. BOTTLE
- C. LETTERS "HR"
- D. SHELL CASING
- E. RED STAIN
- F. FIBERS
- G. GUN SHOT WOUND
- H. CIGARETTE INSIDE OPEN DRAWER

TITLE BLOCK

CASE # 367-85-4819  
 OFFENSE: DEATH INVESTIGATION  
 SCENE PORTAYED: ROOM #7  
 BLDG: S-3251-B, TROOP BILLET  
 LOCATION: FT MCCLELLAN, AL  
 VICTIM: SPA FAYE M MILLER  
 TIME & DATE BEGAN: 1000 12 JAN 85  
 SKETCHED BY: SA TIM C WINKLER  
 VERIFIED BY: SGT BETTY C. GOODWIN

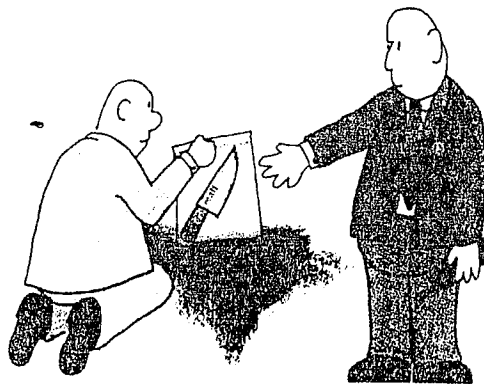
NOT TO SCALE

# CRIME SCENE SKETCHING ACTIVITY

**Introduction:** Today you will be learning about the very important skill of crime scene sketching. The goal of this project is to give you the opportunity to practice the skills of drawing crime scene sketches. There will be a group component where you will be creating the crime scene and helping each other to draw the “rough” sketches. For the individual component, you will be turning the rough sketch into a smooth, finished product.

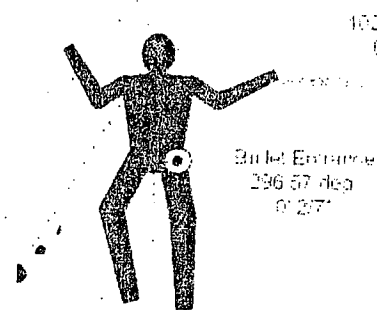
## Directions:

1. To draw a crime scene, you must **HAVE** a crime scene! As a group, create a crime scene using the props provided. The large 36x24 paper represents the “room”.
2. Each investigator at the crime scene (you) must draw this crime scene using the guidelines presented in the document “Making a Rough Sketch”.
3. When the rough sketch is completed, you are then responsible for turning your rough sketch into a smooth sketch, drawn to scale.
4. **FOR FUN**, be ready as a group to share your drawings and provide a explanation as to who, what, where, when, how and why!



"Yup, it's the Personalized Knife Killer again.  
Same M.O., same name engraved on the  
murder weapon."

# Crime Scene Sketch Rubric



Name:

Date:

Block:

Report # (5 pt) \_\_\_\_\_

Alleged offense: (5 pt.) \_\_\_\_\_

Name of victim: (5 pt.) \_\_\_\_\_

Scene (room, bldg.#, etc.) (5 pt.) \_\_\_\_\_

Location: (5 pt.) \_\_\_\_\_

Time & date of sketch: (5 pt.) \_\_\_\_\_

Name of sketch artist: (5 pt.) \_\_\_\_\_

Name of who verified sketch: (5 pt.) \_\_\_\_\_

Caption on sketch: (5 pt.) \_\_\_\_\_

Legend: (5 pt.) \_\_\_\_\_

Evidence is labeled/matches legend: (5 pt.) \_\_\_\_\_

Drawn to scale: (10 pt.) \_\_\_\_\_

Compass direction North: (5 pt.) \_\_\_\_\_

Rough sketch shows triangulation of evidence: (10 pt.) \_\_\_\_\_

Overall Quality (neat, evidence of care, effort) (20 pt.) \_\_\_\_\_

Total Grade: (100 pt.) \_\_\_\_\_

Comments:

